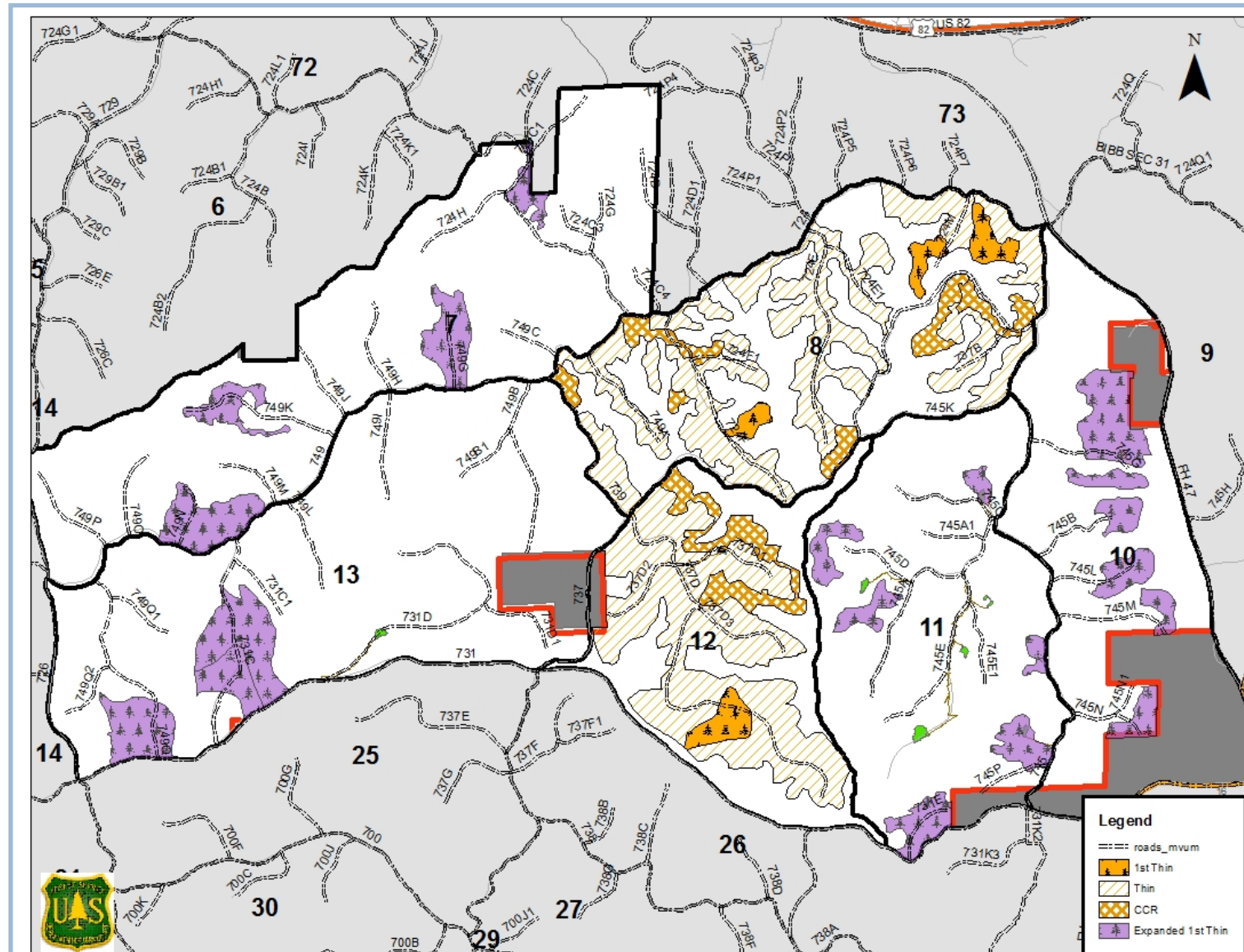


Pearson Gap Proposed Action

Actions and Treatments	Units
<p>Restore longleaf on native longleaf sites. Includes concurrent and contemporaneous actions</p> <ul style="list-style-type: none"> Commercial Harvest — Clear-cut with reserves (Acres) Site Preparation — Herbicide (Triclopyr, Imazapyr, & Glyphosate) and burn (Acres) Artificial Reforestation — Planting longleaf pine (Acres) Release — Herbicide (Triclopyr, Imazapyr, & Glyphosate) and Mechanical 	189
<p>Thin immature longleaf stands with high densities of “seeded in” loblolly by removing loblolly and increasing the spacing between longleaf. Reduce stocking by 50% achieving open woodland to savannah conditions.</p> <ul style="list-style-type: none"> Commercial Harvest — Thin (Acres) Midstory Control — Herbicide (Triclopyr) and Mechanical (Acres) 	88
<p>Thin overstocked native longleaf, over 40 years old, by removing loblolly, hardwoods and dense pockets of longleaf to achieve open woodland to savannah conditions.</p> <ul style="list-style-type: none"> Commercial Harvest (Acres) Midstory Control — Herbicide (Triclopyr) and Mechanical (Acres) 	1,122
<p>Suppress active southern pine beetle infestations by variations of “Cut and Leave” and “Cut and Remove” treatments (Acres)</p>	TBD
<p>Support restoration activities by creation and restoration of temporary roads (Miles)</p>	0.6

Combined Project Areas



Pearson Gap Expanded Proposed Action

Actions and Treatments	Units
<p>Thin immature longleaf stands with high densities of “seeded in” loblolly by removing loblolly and increasing the spacing between longleaf. Reduce stocking by 50% achieving an open woodland to savannah conditions.</p> <ul style="list-style-type: none"> Commercial Harvest —Thin (Acres) Midstory Control — Herbicide (Triclopyr) and Mechanical (Acres) 	643
<p>Suppress active southern pine beetle infestations by variations of “Cut and Leave” and “Cut and Remove” treatments (Acres)</p>	TBD
<p>Support restoration activities by creation and restoration of temporary roads (Miles)</p>	0.5



Open House March 3, 2016

5:30 PM - 7:30 PM

Bibb County Board of Education

721 Walnut Street

Centreville, Alabama 35042

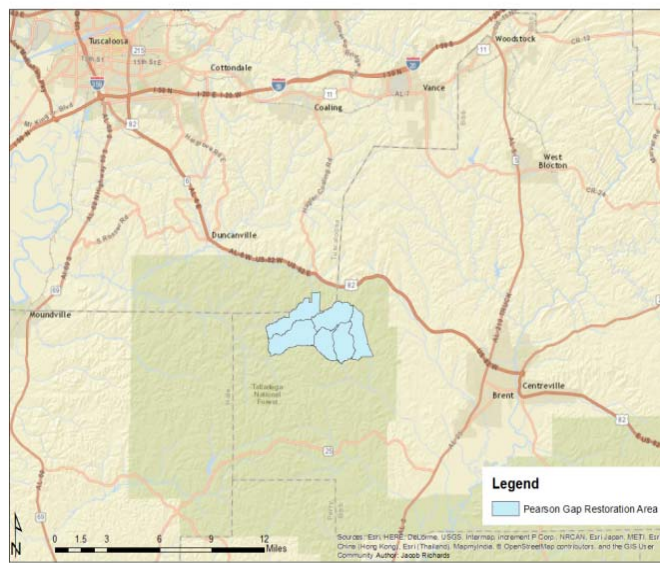
Comments Requested by March 21, 2016

The Pearson Gap Project and the Pearson Gap Expanded Project lie in the northern portion of the Talladega National Forest, Oakmulgee District predominately in Bibb County, but with a portion in Tuscaloosa County. The project areas are approximately 15 miles east-southeast of Tuscaloosa, Alabama.

The project areas lie within the Lower Black Warrior and Cahaba sub-basins and in the headwaters of the Affonee, Bear, and South Sandy Creeks.

The total area analyzed for both projects is 8,842 acres

Pearson Gap Vicinity Map



USDA is an equal employment opportunity provider, employer and lender.

The **Pearson Gap Project** is designed to move some of the highest quality longleaf on the Oakmulgee District toward the desired condition of longleaf woodlands with intermixed savannahs. The area currently supports 12 active red-cockaded woodpecker family groups (clusters) and is considered to be at capacity.

The **Pearson Gap Project** proposes to thin approximately 50% of the 2,482 acres within the project area, followed by midstory treatment and prescribed fire. Less than 8% of the area is proposed for a clear-cut removal of dying loblolly pine and re-establishing longleaf. In many of these areas there is sufficient mature longleaf to be retained as “reserve” trees to produce an end-result of savannah conditions.

The **Pearson Gap Expanded Project** buffers the Pearson Gap Project Area and is designed to reduce the risk to Southern Pine Beetle infestations by thinning areas heavily stocked stands with a significant component of loblolly. Based on past experience these stands that are less than 30 years old and densely stock present the greatest risk to Southern Pine Beetle infestations.

The Pearson Gap Expanded Project actions are proposed as a means to guard the healthy habitat in the Pearson Gap project and neighboring private lands from potential Southern Pine Beetle infestations.

If you have any questions, comments, or information you feel we should consider regarding these projects, please feel free to contact us at 205-926-9765 or via email at comments-southern-alabama-oakmulgee@fs.fed.us.

While your comments are always welcome, they will be most helpful if you send them by **March 21, 2016**. You may also mail or hand deliver your comments to U.S. Forest Service, 9901 Highway 5, Brent, Alabama 35034.

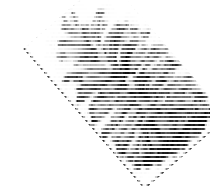


For additional information, please contact:

Michael J Caylor, Forester
NEPA/ RCW / Longleaf Restoration
Forest Service

National Forests in Alabama, Oakmulgee Ranger District

p: 205-926-9765 x206
c: 334-207-2501
f: 205-926-9712
mcaylor@fs.fed.us



Talladega National Forest Oakmulgee District

**Presents the Proposed Actions
for the
Pearson Gap Project
and the
Pearson Gap Expanded Project**



*Request for Comments
&
Invitation to an
Open House*

